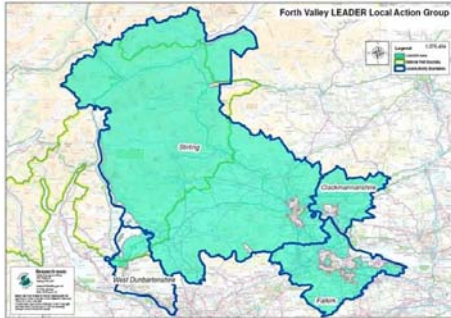




# Forth Valley & Lomond LEADER

LEADER is a new funding programme operating in your area.



Rural areas of Stirling, Falkirk, Clackmannanshire and part of West Dunbartonshire are in the new area covered by Forth Valley & Lomond LEADER

LEADER funds innovative projects which will:  
*“Revitalise rural communities and conserve the natural environment”*



Community Organisations; Business Associations; and Public Agencies are all eligible to apply

The first step is to fill in our initial enquiry form, available at [www.fvl.org.uk](http://www.fvl.org.uk), or contact the LEADER team on 01786 442687



Forth Valley & Lomond LEADER  
Stirling Council  
Viewforth  
Stirling FK8 2ET  
[www.fvl.org.uk](http://www.fvl.org.uk)  
[info@fvl.org.uk](mailto:info@fvl.org.uk)





## **Forth Valley & Lomond LEADER**

Funding of £2.77 million has been awarded to the rural Forth Valley and Lomond area. This funding will support **pilot or innovative community projects** which help **build stronger and richer local communities** and business networks in the rural Forth Valley and Lomond area.

### **Outline enquiry form**

The first stage in any application to LEADER is to download and return an outline enquiry form from [www.fvl.org.uk](http://www.fvl.org.uk). The LEADER team will then contact you to help you develop your project into an application.

### **We want to invest in the following areas:**

#### **Revitalising communities**

- Ensuring sustainable local services
- Developing community owned assets
- Supporting sustainable local enterprise
- Celebrating Forth Valley and Lomond's culture
- Sensitively developing the built environment

#### **Conservation of the rural environment**

- Connecting businesses and communities to natural assets
- Environmental improvements
- Ensuring sensitive access for all
- Understanding Forth Valley and Lomond's natural heritage

### **How much can we apply for?**

Applicants will need to show how costs have been calculated, and the award will be based on the minimum needed to allow a project to proceed. Contributions will normally be up to 50% of the eligible project costs and match funding will be required.

### **When is the closing date?**

There is no fixed deadline. The programme will operate until 2013 and decisions on awards will be made at least quarterly.

*"We want the Forth Valley and Lomond area to be first choice for people to live, work and to visit – and we want to be a leader in sustainable development – ensuring that economic, social and environmental progress is not just for tomorrow but for the long term"*

Forth Valley and Lomond LEADER Local Action Group



Forth Valley & Lomond LEADER  
Stirling Council  
Viewforth  
Stirling FK8 2ET  
[www.fvl.org.uk](http://www.fvl.org.uk)  
[info@fvl.org.uk](mailto:info@fvl.org.uk)

